

REDISTRICTING

2013 - 2014

Presentation to
North Allegheny School Board
October 23, 2013



AGENDA

Introduction

Dr. Raymond Gualtieri

The Process of Developing Scenarios

Mr. Roger Botti

Review of Draft Scenario Information

Mr. Roger Botti

Focus Group Meetings

Dr. Robert Scherrer



Mr. Roger Botti

Director of Transportation and Operations



TIMELINE

September 2013

- Conduct administrative team meetings
- Analyze data
- Schedule parent focus group meetings
- Presentation of the project timeline to the School Board

October 2013

- Develop and refine draft scenarios
- Share proposed scenarios with the School Board

November 2013 - December 2013

- Convene school focus group meetings to review proposed scenarios and elicit feedback
- Refine scenarios based on feedback
- Develop transition plan
- Provide update for the School Board on December 18, 2013



TIMELINE *(continued)*

January 2014

- Propose recommended scenario for School Board review on January 15, 2014

February 2014

- Board of School Directors votes on recommended scenario during a Special Voting Meeting on February 19, 2014
- Revise transition plan

March 2014 – August 2014

- Begin transition process in March



Initial Considerations

- Current and potential overcrowding in several elementary and middle schools generate the need to redistrict.

- Focus on:
 - Best utilization of available space in each building
 - Best educational experience for all students
 - Realistic boundaries and efficient transportation routes

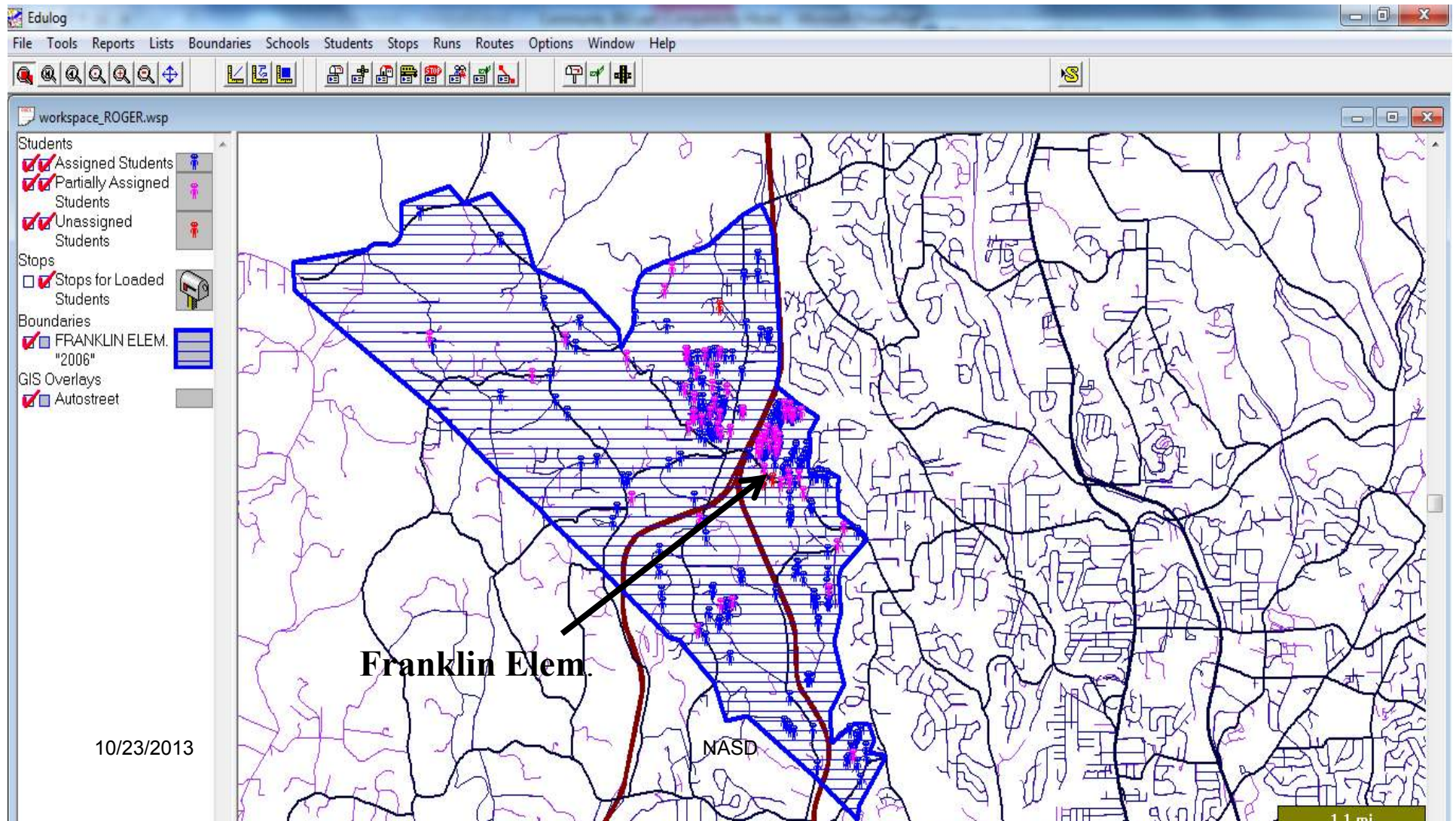


Initial Challenges

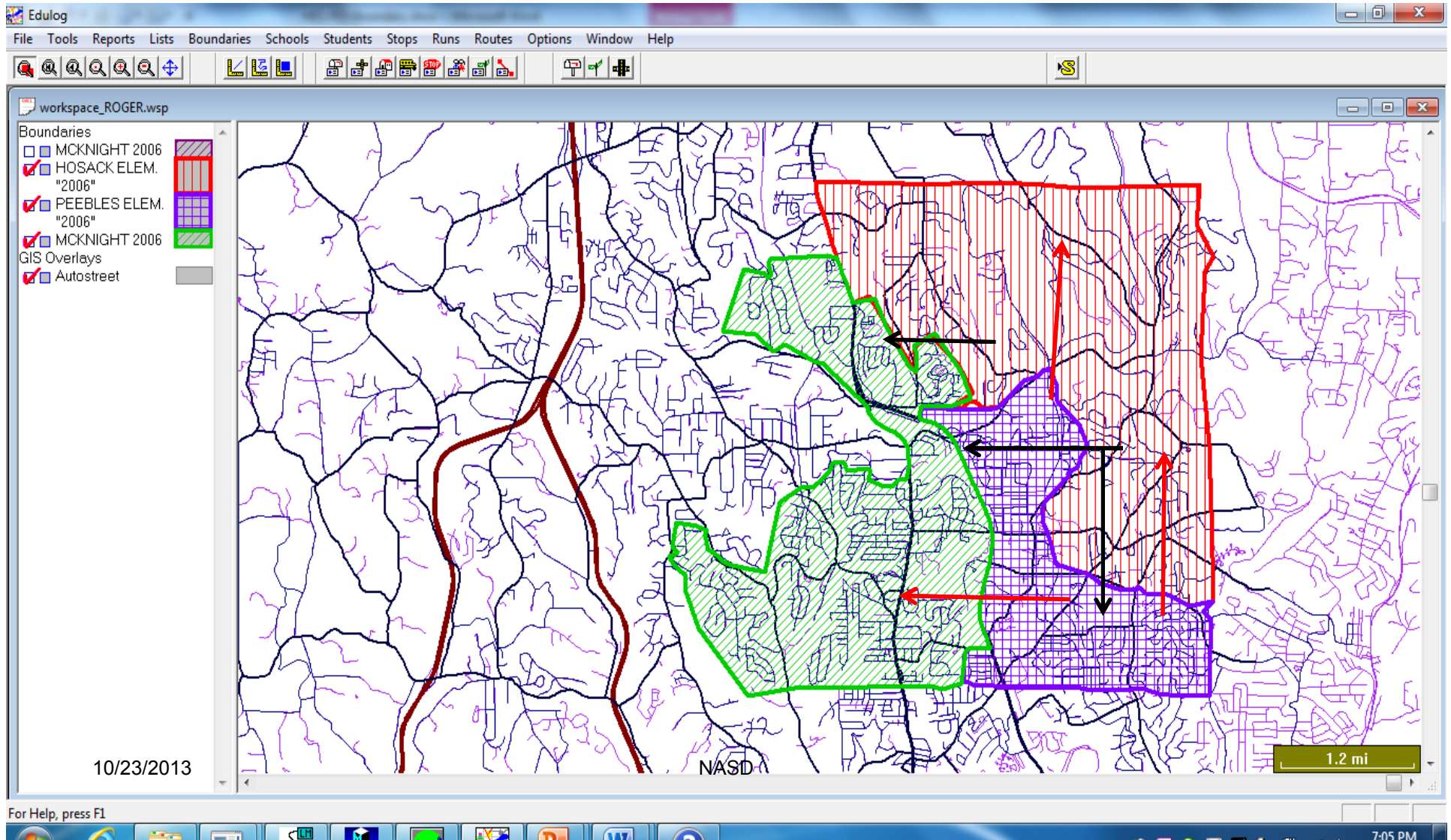
- Resident student density
 - The homes in which our students live are not evenly distributed across the District
 - Of particular note: Dense population in Franklin Park area

- Geographic limitations of two schools
 - PES and HES are located in close proximity to Pine Township, Hampton Township, Shaler Township, and Ross Township. The area from which their student populations can be drawn is limited in range by that factor.

This map illustrates the student density in the immediate area of Franklin Elementary School.



This map illustrates the geographic limitations of PES and HES attendance zones when attempting to move boundaries.

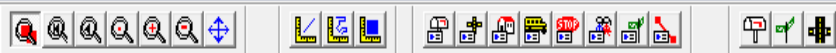




Elementary Attendance Zones

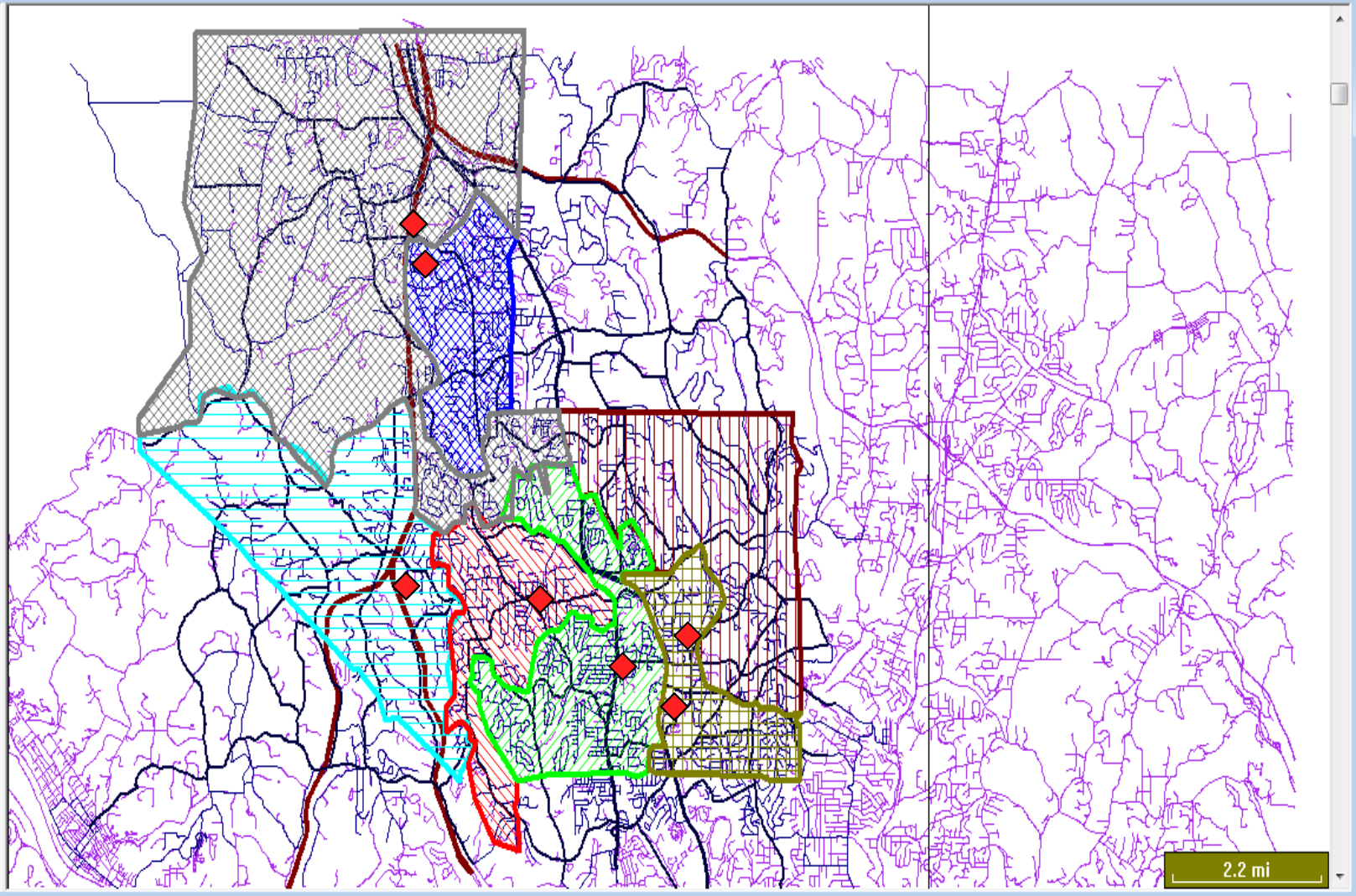
2013-2014

- The following slide shows a map of our District highlighting the locations of our seven elementary schools and the current attendance zones.



- Boundaries
- BRADFORD WOODS "2006"
 - FRANKLIN ELEM. "2006"
 - HOSACK ELEM. "2006"
 - INGOMAR ELEM. 2006_
 - MCKNIGHT 2006
 - PEEBLES ELEM. "2006"
 - MARSHALL ELEM. "2006"
- GIS Overlays
- Autostreet

 SCHOOL



For Help, press F1



NASD



6:44 PM
10/20/2013



First Steps

- Philosophy-driven: The process of developing a draft scenario begins with the identification of a ‘big picture’ concept or philosophy that will drive the decision-making about the re-alignment of attendance zone borders.
- All schools affected: The attendance zones for all elementary schools will have to be adjusted to create an effective redistricting that will serve the District for 5 to 7 years.



Student Enrollment Data

- This data that is being used for draft scenario development:
 - 2013-2014 Student Enrollment data – revised October 1
 - 2014-2015 Projected Student Enrollment data – calculated using five-year retention rates



Calculating Retention Rates

- A retention rate is the historic changes in the retention of each group of students at each grade level as they ascend to the next grade level.
 - Ex: If a 1st grade class is comprised of 54 students in one year and the enrollment moves to 57 students the next year in 2nd grade, the 1st to 2nd grade retention rate is 105.55%



Five-year Retention Rates

- Five-year District-wide average retention rates were used to project District enrollment for 2014-2015.

- The retention rates used are:
 - Birth to Kindergarten 116.62%
 - Kindergarten to 1st 113.94%
 - 1st to 2nd 101.58%
 - 2nd to 3rd 102.13%
 - 3rd to 4th 102.25%
 - 4th to 5th 101.73%



Two Draft Scenarios

Tonight we will describe two different scenarios created as a result of two different philosophies.

- Philosophy #1: Move students eastward to address enrollment concerns
- Philosophy #2: Attempt to use major roadways as natural boundaries

Both scenarios move about 400 students.

Philosophy #1: Move Students to the East

Elementary School	BWE	FES	HES	IES	McK.	PES	MES	Total
Maximum Capacity	550	550	550	550	900	550	900	4550
Current Enrollment	386	515	355	409	813	388	720	3586
Scenario Enrollment 2013-2014	434	397	401	442	746	430	736	3586
Projected Enrollment 2014-2015	429	419	403	440	763	418	729	3601

Philosophy #2

Attempt to Use Major Roads as Natural Borders

Elementary School	BWE	FES	HES	IES	McK.	PES	MES	Total
Maximum Capacity	550	550	550	550	900	550	900	4550
Current Enrollment	386	515	355	409	813	388	720	3586
Scenario Enrollment 2013-2014	425	396	419	439	719	438	750	3586
Projected Enrollment 2014-2015	408	416	421	437	735	434	753	3604



Next Steps

- Additional information on these scenarios will be available at the Focus Group meetings in November and December.
- The District is also working on a hybrid of the two existing draft scenarios to develop a possible third draft scenario.
- As the District continues to refine the elementary draft scenarios, the middle school draft scenarios are also being refined with the goal of providing relief for the overcrowding at Ingomar Middle School.



Dr. Robert Scherrer

Assistant Superintendent for K to 12



Purpose of Focus Group Meetings

1. To present philosophy-driven draft scenarios for consideration and feedback in a community setting.
 - Smaller groups, more focused meetings
 - Clarify questions related to specific communities
 - Gather feedback from specific communities
2. The presentation that will be the basis for all Focus Group meetings will be posted for public review on the NASD website on November 6.
 - While anyone is welcome to attend any meeting, everyone is encouraged to attend the meeting held in their current school attendance area.



School Focus Group Meetings Schedule

ALL MEETINGS: 7:00 PM – 8:30 PM

- **Ingomar Elementary** – November 6, 2013
- **Peebles/Hosack Elementary** – November 7, 2013 @ PES
- **All Middle Schools** – November 11, 2013 @ IMS
- **Franklin Elementary** – November 14, 2013
- **McKnight Elementary** – December 3, 2013
- **Marshall/Bradford Woods Elementary** – December 9, 2013 @

MES



Focus Group Meeting Process

- Each Focus Group meeting will be structured around the same overview presentation that will be posted on the NASD website on Nov. 6.
- Each meeting will highlight elements of the plan specific to the school community where the meeting is held.
 - The middle school scenarios will be highlighted at the middle school meeting.
- Focus group participants may write questions for clarification of information and/or provide written feedback at the meetings.
- Some questions will be able to be answered at the meetings, if they pertain to that specific school community.



Following the Focus Group Meeting

- Over the course of the meeting schedule, answers to questions that are asked consistently will be posted on the NASD website in a FAQ format.
- NA community members will also be able to provide written feedback via a ‘no-response’ email address, starting November 6.
 - The email address will be included in the Focus Group presentation.
 - This feedback will be logged along with the feedback from the meetings.
- Written feedback, from the meetings and the email account, will be considered in the development of the proposed recommended scenario presented to the Board in January

Questions/Comments

