

W
L
N
T
N
O
N

“PROUD TO BE A
TIGER”

NORTH ALLEGHENY SCHOOL DISTRICT
ACTIVITIES CALENDAR

2024

PREPARING
ALL STUDENTS for
SUCCESS in a
CHANGING WORLD



DISTRICT HOURS
Monday-Friday

ADMINISTRATION
7:30 AM-4:00 PM

HIGH SCHOOLS
7:25 AM-2:15 PM

MIDDLE SCHOOLS
8:10 AM-2:58 PM

ELEMENTARY SCHOOLS
9:00 AM-3:30 PM

AM KINDERGARTEN
9:00-11:45 AM

PM KINDERGARTEN
12:45-3:30 PM

Find contact
information for all
of our buildings at
[northallegheny.org/
contact](http://northallegheny.org/contact)



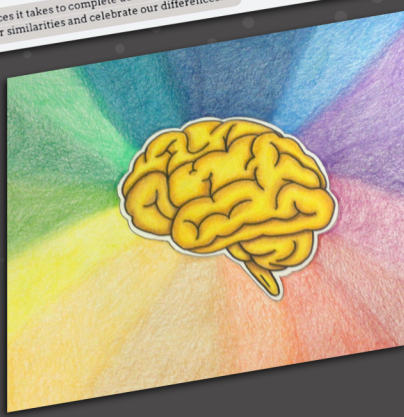
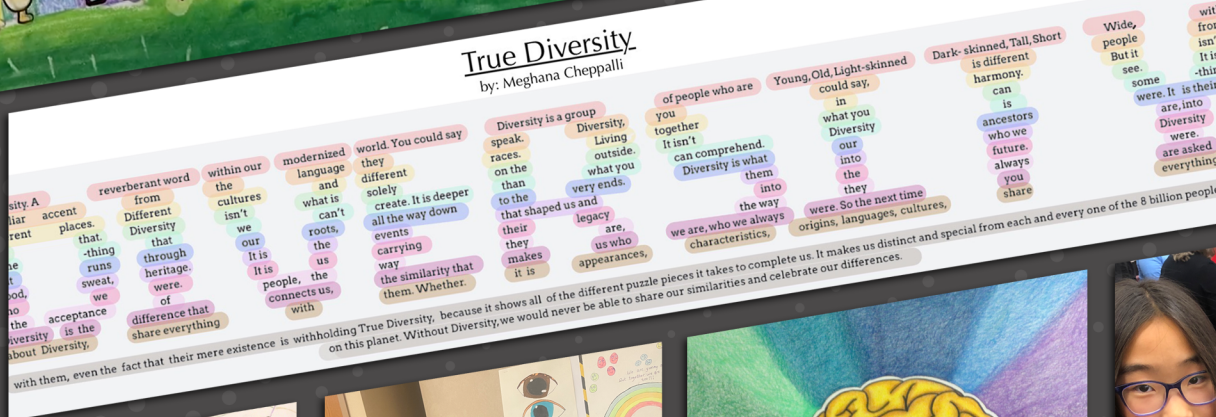
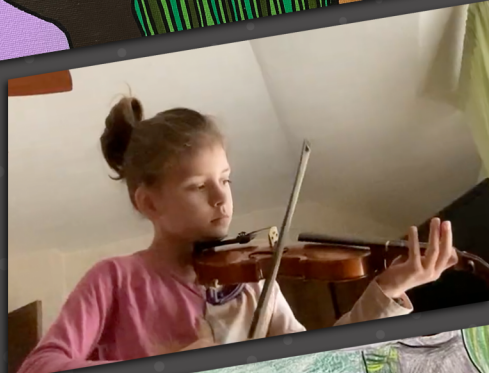
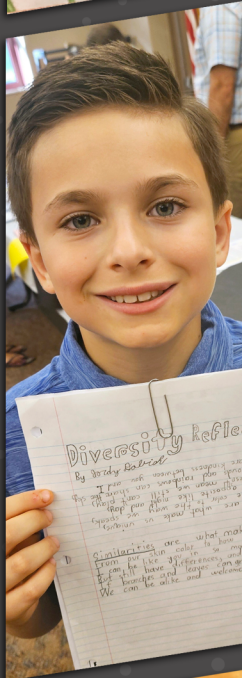
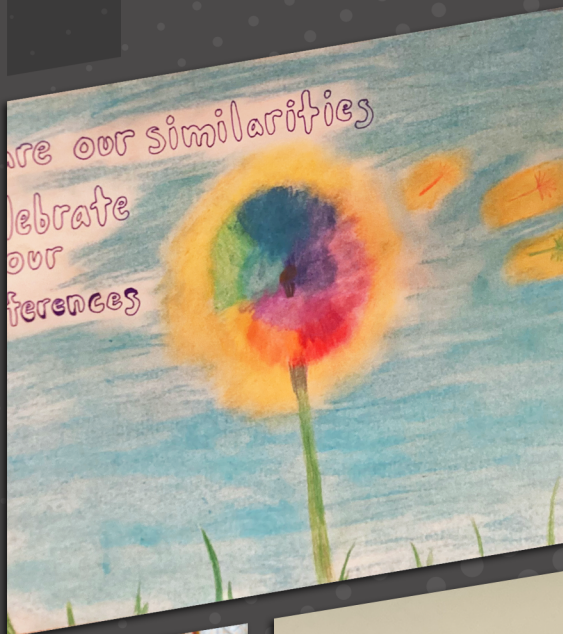
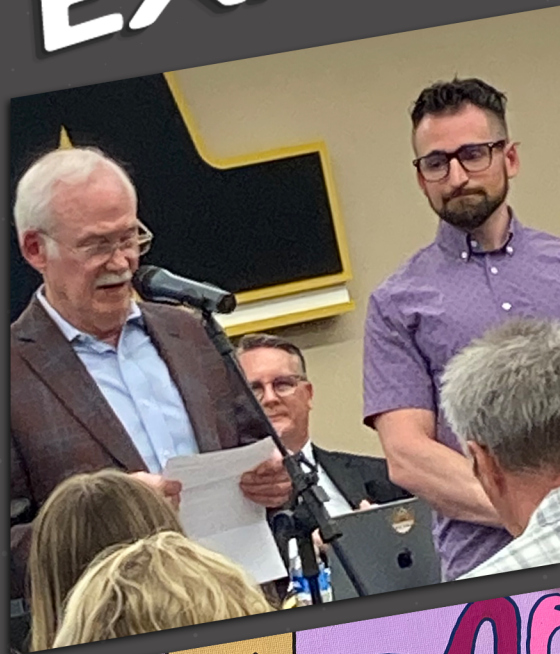
Dr. Marcia Martin

DIVERSITY EXPRESSION contest 2023-24

NA Empower, a committee of North Allegheny staff and students brought together to help foster an inclusive environment where individuals feel supported and empowered, this past year had the great honor of sponsoring the *Dr. Marcia Martin Diversity Expression Contest*—a fine arts competition for NASD students in grades K-12.

The theme of the 2023-24 Contest was “Share Our Similarities, Celebrate Our Differences.”

A longtime educator, Dr. Marcia Martin was an assistant principal, reading specialist and teacher from 1973 to 1989. She became principal at Carson Middle School in 1989 and led the school for 15 years. During her career, Dr. Martin served as the committee chairwoman of North Allegheny School District’s Gender Equity and Diversity Training Program. She won the Gloria Fitzgibbons Award for gender equity work, the Outstanding Educator Award from the American Association of University Women, and the 1995 Don Eichhorn Award in recognition of outstanding middle school programs.



NA
2024
AUGUST



BRADFORD WOODS ELEMENTARY
PROUD TO BE A
TIGER



Bradford Woods Elementary is a special place where learning, growing, and having fun is an exciting journey for students and staff alike! Being part of this community makes us all Proud to be Tigers!

SUNDAY	MONDAY	TUESDAY	WEDNESDAY	THURSDAY	FRIDAY	SATURDAY
<div>School Abbreviations BWE Bradford Woods Elementary CMS Carson Middle FES Franklin Elementary HES Hosack Elementary IES Ingomar Elementary IMS Ingomar Middle MCK McKnight Elementary MES Marshall Elementary MMS Marshall Middle NAI NA Intermediate High NASH NA Senior High PES Peebles Elementary ES Elementary School MS Middle School HS High School CAO Central Administrative Offices FAC Facilities Department</div>	<div>JULY S M T W T F S 1 2 3 4 5 6 7 8 9 10 11 12 13 14 15 16 17 18 19 20 21 22 23 24 25 26 27 28 29 30 31</div>	<div>SEPTEMBER S M T W T F S 1 2 3 4 5 6 7 8 9 10 11 12 13 14 15 16 17 18 19 20 21 22 23 24 25 26 27 28 29 30</div>				
4	<div>HS & MS Football Heat Acclimatization Begins First Day of Fall Boys & Girls Golf</div> 5		<div>NASH Safe Driving Presentation & Parking Permit Sales • 1:30-3:30 PM</div> 6	<div>BWE New Student Orientation • 10:00 AM-Noon IES Kindergarten Orientation • AM—9:00 AM • PM—1:00 PM</div> 7	<div>Marching Band Preview Show • NASH 6:00 PM FES Kindergarten Orientation • AM 9:30-11:30 AM • PM 1:00-3:00 PM</div> 8	NA Kennywood Day 10
11	<div>MES Kindergarten Orientation • AM 10:00AM-Noon • PM 1:00-3:00 PM NASH Junior/New Student Orientation • 11:30 AM First Day of Fall Sports (All Levels)</div> 12	<div>BWE Kindergarten Orientation • AM 9:00-11:00 AM • PM 1:00-3:00 PM FES New Student Orientation • 10:00 AM HES New Student Orientation • 10:00 AM MCK New Student Orientation • 10:00 AM MES New Student Orientation • 10:30 AM NAI New Student Orientation • 11:00 AM</div> 13	<div>HES Kindergarten Orientation • AM 10:00-11:30 AM • PM 1:00-2:30 PM IES New Student Orientation • 10:00 AM PES Kindergarten Orientation • AM 9:00-11:00 AM • PM Noon-2:00 PM</div> 14	<div>CMS/IMS New to NASD Student Orientation • 1:00 PM MCK Kindergarten Orientation • AM—10:00 AM • PM—1:00 PM MMS New to NASD Student Orientation • 11:00 AM PES New Student Orientation • 10:00 AM NASH Safe Driving Presentation & Parking Permit Sales • 10:00 AM-Noon</div> 15	<div>CMS/IMS/MMS Walk Your Schedule • 9:30-10:30 AM</div> 16	17
<div>BWE Popsicles on the Playground • Kindergarten 3:00-4:30 PM • First Grade 5:00-6:30 PM</div> 18	<div>Professional Learning Day • No School NASH Walk-Your-Schedule • 6:00-7:30 PM</div> 19	<div>Professional Learning Day • No School NAI Walk-Your-Schedule • 6:00-7:30 PM</div> 20	<div>Professional Learning Day • No School</div> 21	<div>1 FIRST DAY OF SCHOOL FOR STUDENTS District-wide Kindergarten Abbreviated Day • AM 9-10:45 AM • PM 1:45-3:30 PM</div> 22	<div>2</div> 23	<div>SAT at NASH • Doors open at 7:15 AM</div> 24
25	<div>3 MES Back to School Social • 5:30 PM</div> 26	<div>4 Middle School GOAL Parent Meeting • 10:00 AM at MMS • 6:30 PM at IMS Superintendent's Newcomers' Coffee • CAO 7:00 PM</div> 27	<div>5 BWE Fall Family Night • 5:00-7:00 PM NAI Impact Meeting • 7:00 PM</div> 28	<div>6 HES Get Acquainted Night • 5:30-7:30 PM MCK Back to School Bash • 5:30 PM FES PFA Back-to-School Night • 5:30-7:30 PM</div> 29	<div>7 CMS We Are Carson Day IMS Proud to be Ingomar Day</div> 30	31

WASH STATE

2023

SEPTEMBER



2023 Mini-Course Day at Carson Middle School was a HUGE success. Students participated in over 20 different activities that provided all of CMS an opportunity to explore interests, connect with others, and pay it forward.

SUNDAY	MONDAY	TUESDAY	WEDNESDAY	THURSDAY	FRIDAY	SATURDAY
	No School	8	9 HES PFA Meeting • 7:00 PM IES PTO Back to School Ice Cream Social • 5:00 PM NAI Open House • 6:30 PM NASH Junior & Faculty Picture Day	10 CMS/IMS/MMS Open House • 6:00 PM NAI/NASH PTSO • Ponce Room, Baierl Center/Virtual Option 9:00 AM NASH Senior Make-up & Faculty Picture Day	11 IES PTO Meeting • 9:30 AM MES PFA Meeting • 9:15 AM	
1	2 LABOR DAY	3	4	5	6	7
GRANDPARENTS DAY NATIONAL ARTS IN EDUCATION WEEK	12	13 MES Fall Picture Day PES Fall Picture Day PES PTA Meeting • 9:15 AM NA Foundation Meeting • CAO Board Room 7:00 PM	14 School Board Work Session • CAO Board Room 7:00 PM PATRIOT DAY	15 CMS/IMS/MMS PTSO Meetings • 9:30 AM MCK PFA Meeting • 9:15 AM K-5 Open House • All Elementary Schools 6:00 PM	16 FES PFA Meeting • 9:30 AM NAI Picture Day Special Ed Parent Networking Group • Ponce Room, Baierl Center 9:30 AM	ACT at NASH • Doors open at 7:15 AM
8	9	10	11	12	13	14
MAWLID AL-NABI (begins at sunset) HISPANIC HERITAGE MONTH (through October 15)	17 FES School Picture Day MALWID AL-NABI (ends at nightfall)	18 BWE PFA Meeting • 9:30 AM	19 BWE & IES Camp Kon-O-Kwee UBO Meeting • Ponce Room, Baierl Center 6:30 PM	20 MES Camp Kon-O-Kwee NASH Open House • 6:30 PM	21 IMS Fall Picture Day Elementary Night Football Game vs Norwin • Newman Stadium 7:30 PM	NASH HS Musical Auditions • 11:00 AM
15	16	17	18	19	20	21
FIRST DAY OF AUTUMN	22 NA Foundation Golf Classic • Sewickley Heights Country Club	23 BWE Fall Picture Day	24 HES & PES Camp Kon-O-Kwee School Board Regular Meeting • CAO Board Room 7:00 PM	25 MCK Camp Kon-O-Kwee NASH NHS Fall Induction • 2:30 PM District TAG Meeting • MES 9:30 AM	26 CMS Picture Day SPLC/SAC • 9:30-11:00 AM	Drive-thru Flu Clinic • CAO 8:00-11:00 AM
22	23	24	25	26	27	28
29	30					

AUGUST

S	M	T	W	T	F	S
				1	2	3
4	5	6	7	8	9	10
11	12	13	14	15	16	17
18	19	20	21	22	23	24
25	26	27	28	29	30	31

OCTOBER

S	M	T	W	T	F	S
			1	2	3	4
5	6	7	8	9	10	11
12	13	14	15	16	17	18
19	20	21	22	23	24	25
26	27	28	29	30	31	

School Abbreviations

BWE	Bradford Woods Elementary
CMS	Carson Middle
FES	Franklin Elementary
HES	Hosack Elementary
IES	Ingomar Elementary
IMS	Ingomar Middle
MCK	McKnight Elementary
MES	Marshall Elementary
MMS	Marshall Middle
NAI	NA Intermediate High
NASH	NA Senior High
PES	Peebles Elementary
ES	Elementary School
MS	Middle School
HS	High School
CAO	Central Administrative Offices
FAC	Facilities Department

NA
2022

OCTOBER



Franklin Elementary School community looks forward to our annual FES Staff vs. Parent Volleyball Game! From Tiny Tigers singing the anthem to Franklin students cheering, it's all about Tiger Pride as parents and staff "Get After It" on the court in pursuit of the coveted trophy. This Parent Faculty Association-sponsored event showcases the positive school culture and strong relationships between our FES staff, students, and families.

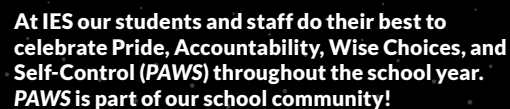
SUNDAY	MONDAY	TUESDAY	WEDNESDAY	THURSDAY	FRIDAY	SATURDAY
<div>SEPTEMBER</div> <div>S M T W T F S</div> <div>1 2 3 4 5 6 7</div> <div>8 9 10 11 12 13 14</div> <div>15 16 17 18 19 20 21</div> <div>22 23 24 25 26 27 28</div> <div>29 30</div>	<div>NOVEMBER</div> <div>S M T W T F S</div> <div>1 2</div> <div>3 4 5 6 7 8 9</div> <div>10 11 12 13 14 15 16</div> <div>17 18 19 20 21 22 23</div> <div>24 25 26 27 28 29 30</div>	28 MCK Picture Day	29 BWE Breakfast Buddies (A-L) • 8:15 AM EAC • 9:30 AM NAI Parent Coffee • Library 7:30 AM NAI/NASH PTSO • NAI and Virtual Option 8:30 AM ROSH HASHANA (begins at sunset) NATIONAL CUSTODIAL WORKERS DAY	30 IES Fall Picture Day ROSH HASHANA CHAITRA NAVRATRI (through October 12)	31 BWE Breakfast Buddies (M-Z) • 8:15 AM HES Fall Picture Day IES PTO Meeting • 9:30 AM MES PFA Meeting • 9:15 AM MMS Winter Sports Meeting MMS 7th Grade Team B Camp Guyasuta ROSH HASHANA (ends at nightfall)	SAT at NASH • Doors open at 7:15 PM
6	7	8	9	10	11	12
	32 PES Fall Book Fair Community Connections • 6:30-8:00 PM	33 PES PTA Meeting • 6:30 PM NA Foundation Meeting • CAO Board Room 7:00 PM	34 School Board Work Session • A.W. Beattie Career Center 7:00 PM	35 CMS, IMS, MMS PTSO Meeting • 9:30 AM	36 FES PFA Meeting • 9:30 AM Special Ed Parent Networking Group • Ponce Room, Baierl Center 9:30 AM MMS 7th Grade Team A Camp Guyasuta	YOM KIPPUR (ends at nightfall)
13	37 HES Fall Book Fair MCK Book Fair COLUMBUS DAY NATIONAL SCHOOL LUNCH WEEK	38 HES Breakfast Buddies (A-L) • 8:15 AM College Financial Aid Night • Virtual 7:00 PM MCK Book Fair	39 MCK Book Fair SUKKOT (begins at sunset, through October 23)	40 FES Camp Kon-O-Kwee HES Breakfast Buddies (M-Z) • 8:15 AM MES Breakfast Buddies (A-L) • 8:00 AM MCK Book Fair NASH Parent Coffee • Ponce Room, Baierl Center 8:00 AM NA Hall of Fame Banquet • The Chadwick 5:30 PM	41 CMS Mini Course Day MCK Book Fair MES Breakfast Buddies (M-Z) • 8:00 AM MMS Fall Picture Day Homecoming Parade/Game • 5:30 PM Homecoming Football Game vs Pine-Richland • Newman Stadium 7:30 PM	NAI Homecoming • 7:30 PM NASH Homecoming Dance • 7:30 PM
20	42 NATIONAL SCHOOL BUS SAFETY WEEK	43 Special Ed Advisory • CAO 1:00 PM	44 NAI Fall Play Senior Citizen & Gold Card Performance • 3:30 PM School Board Regular Meeting • CAO Board Room 7:00 PM RED RIBBON WEEK BEGINS (through October 31)	45 NAI Fall Play • 7:00 PM Gifted Ed Advisory • CAO 1:00 PM	46 Elementary/Secondary Report Period Ends Senior Night Football Game vs Seneca Valley • Newman Stadium 7:30 PM	NAI Fall Play • 2:00 PM • 7:00 PM NA Foundation Trick-or-Trot • Marshall Campus PSAT at NASH • Doors open at 7:15 AM
27	47	48	49	50 ES Halloween Parades & Parties • Check with each building for schedules HALLOWEEN		School Abbreviations BWE Bradford Woods Elementary CMS Carson Middle FES Franklin Elementary HES Hosack Elementary IES Ingomar Elementary IMS Ingomar Middle MCK McKnight Elementary MES Marshall Elementary MMS Marshall Middle NAI NA Intermediate High NASH NA Senior High PES Peebles Elementary ES Elementary School MS Middle School HS High School CAO Central Administrative Offices FAC Facilities Department
28	29	30	31			

A collage of students from Hosack Elementary, with the text "PROUD TO BE A TIGER" and a large paw print graphic. The background is black with a pattern of white polka dots. The text "HOSACK ELEMENTARY" is in small white capital letters. "PROUD TO BE A" is in yellow, and "TIGER" is in large, bold, yellow capital letters. A large, grey paw print is to the right of the text. The collage shows a group of diverse students, mostly of elementary school age, looking towards the camera. Some are wearing blue polo shirts, and one is wearing a red and white plaid shirt. The collage is tilted slightly to the right.

Hosack Elementary, though small, embodies the Mighty **ROARS** values, guiding students in learning, helping, and supporting each other. Students annually raise funds for local charities chosen by the 5th grade, engaging in various activities like dress-up days, and supporting the Cavlovich Family. The 5th grade leads initiatives like the *Day of Giving*, aiding local food banks and nursing homes, while the school as a whole contributes to causes like North Hills Outreach and The Carnegie Elementary Free Store. Additionally, 5th graders have a great time volunteering as Best Buddies.

SUNDAY	MONDAY	TUESDAY	WEDNESDAY	THURSDAY	FRIDAY	SATURDAY
<div>School Abbreviations</div> <div>BWE CMS FES HES IES IMS MCK MES MMS NAI NASH PES ES MS HS CAO FAC</div> <div>Bradford Woods Elementary Carson Middle Franklin Elementary Hosack Elementary Ingomar Elementary Ingomar Middle McKnight Elementary Marshall Elementary Marshall Middle NA Intermediate High NA Senior High Peebles Elementary Elementary School Middle School High School Central Administrative Offices Facilities Department</div>	<div>OCTOBER</div> <div>S M T W T F S</div> <div>1 2 3 4 5</div> <div>6 7 8 9 10 11 12</div> <div>13 14 15 16 17 18 19</div> <div>20 21 22 23 24 25 26</div> <div>27 28 29 30 31</div>	<div>DECEMBER</div> <div>S M T W T F S</div> <div>1 2 3 4 5 6 7</div> <div>8 9 10 11 12 13 14</div> <div>15 16 17 18 19 20 21</div> <div>22 23 24 25 26 27 28</div> <div>29 30 31</div>			<div>Professional Learning Day</div> <div>• No School</div> <div>DIWALI</div> <div>NATIONAL NATIVE AMERICAN HERITAGE MONTH</div>	<div>SAT at NASH</div> <div>• Doors open at 7:15 AM</div>
<div>DAYLIGHT SAVING TIME ENDS</div> <div>3</div>	<div>Professional Learning Day</div> <div>• No School</div> <div>MES Book Fair</div> <div>NASH Musical Staff/Senior Citizen Performance</div> <div>• 4:30 PM</div> <div>Elementary Conference Day</div> <div>• Noon-7:45 PM</div> <div>4</div>	<div>Professional Learning Day</div> <div>• No School</div> <div>MES Book Fair</div> <div>Elementary Conference Day</div> <div>• 8:00 AM-3:45 PM</div> <div>ELECTION DAY</div> <div>5</div>	<div>51</div> <div>HES PFA Meeting</div> <div>• 7:00 PM</div> <div>MES Book Fair</div> <div>NAI Picture Retake/Make-up Day</div> <div>NASH Fall Musical</div> <div>• 7:00 PM</div> <div>6</div>	<div>52</div> <div>BWE Picture Retake/Make-up Day</div> <div>CMS Picture Retake/Make-up Day</div> <div>MES Book Fair</div> <div>NASH Group Picture Day</div> <div>• 7:00 AM</div> <div>NASH Musical</div> <div>• 7:00 PM</div> <div>PES Fall Picture Retake/Make-up Day</div> <div>7</div>	<div>53</div> <div>CMS/MMS Veterans Day Assembly</div> <div>FES PFA Meeting</div> <div>• 9:30 AM</div> <div>IES PTO Meeting</div> <div>• 9:30 AM</div> <div>MES PFA Meeting</div> <div>• 9:15 AM</div> <div>MES Book Fair</div> <div>8</div>	<div>NASH Musical</div> <div>• 7:00 PM</div> <div>9</div>
<div>NASH Musical</div> <div>• 2:00 PM</div> <div>10</div>	<div>54</div> <div>BWE Fall Book Fair</div> <div>FES Veterans Day Program</div> <div>• 2:15 PM</div> <div>IES Fall Book Fair</div> <div>MES Book Fair</div> <div>MES Veterans Day Program</div> <div>• 8:30 AM</div> <div>Elementary Growth & Development Parent Preview</div> <div>• MES 6:30 PM</div> <div>VETERANS DAY</div> <div>11</div>	<div>55</div> <div>BWE Book Fair Family Night</div> <div>• 3:30-7:30 PM</div> <div>BWE PFA Meeting</div> <div>• PFA Meeting 6:00 PM</div> <div>IES/MES Fall Book Fair</div> <div>IES/IMS Fall Picture Make-up Day</div> <div>MCK Picture Retake/Make-up Day</div> <div>PES PTA Meeting</div> <div>• 9:15 AM</div> <div>NA Foundation Meeting</div> <div>• CAO Board Room 7:00 PM</div> <div>12</div>	<div>56</div> <div>IES Fall Book Fair</div> <div>IES Book Fair Family Night</div> <div>MES Book Fair</div> <div>Middle School Musical Staff/Senior Citizen Performance</div> <div>• NASH 4:30 PM</div> <div>UBO Meeting</div> <div>• Ponce Room, Baierl Center 6:30 PM</div> <div>School Board Work Session</div> <div>• CAO Board Room 7:00 PM</div> <div>13</div>	<div>57</div> <div>CMS/IMS/MMS PTSO Meeting –Resources at the Middle Level</div> <div>• 9:30 AM</div> <div>IES Fall Book Fair</div> <div>MES Book Fair</div> <div>MCK PFA Meeting</div> <div>• 6:30 PM</div> <div>MES Picture Retake/Make-up Day</div> <div>Middle School Musical</div> <div>• NASH 7:00 PM</div> <div>14</div>	<div>58</div> <div>HES Picture Retake/Make-up Day</div> <div>IES Fall Book Fair</div> <div>MES Book Fair</div> <div>15</div>	<div>Middle School Musical</div> <div>• NASH 7:00 PM</div> <div>16</div>
<div>Middle School Musical</div> <div>• NASH 2:00 PM</div> <div>17</div>	<div>59</div> <div>FES Fall Book Fair</div> <div>MCK Penny Wars</div> <div>• through Friday, November 22</div> <div>NAI/NASH Choral Concert Rehearsal</div> <div>• NASH 2:30 PM</div> <div>Community Connections</div> <div>• IMS 6:30 PM</div> <div>First Day of Winter Sports (All Levels)</div> <div>18</div>	<div>60</div> <div>FES Fall Book Fair</div> <div>FES Breakfast Buddies (A-H)</div> <div>• 8:00 AM</div> <div>NAI/NASH Choral Concert</div> <div>• NASH 7:00 PM</div> <div>19</div>	<div>61</div> <div>FES Fall Book Fair</div> <div>FES Breakfast Buddies (I-P)</div> <div>• 8:00 AM</div> <div>School Board Regular Meeting</div> <div>• CAO Board Room 7:00 PM</div> <div>20</div>	<div>62</div> <div>FES Fall Book Fair</div> <div>FES School Picture Make-ups</div> <div>FES Breakfast Buddies (Q-Z)</div> <div>• 8:00 AM</div> <div>NASH Parent Coffee</div> <div>• Ponce Room, Baierl Center 8:00 AM</div> <div>NAI/NASH PTSO Meeting</div> <div>• Ponce Room, Baierl Center/ Virtual Option 9:00 AM</div> <div>21</div>	<div>63</div> <div>FES Fall Book Fair</div> <div>22</div>	<div>23</div>
<div>24</div>	<div>64</div> <div>PMEA District Chorus Auditions</div> <div>• NASH 4:00 PM</div> <div>25</div>	<div>65</div> <div>NHS Sponsored Blood Drive</div> <div>• NASH 6:45 AM</div> <div>26</div>	<div>66</div> <div>27</div>	<div>Thanksgiving Break</div> <div>• No School</div> <div>THANKSGIVING DAY</div> <div>28</div>	<div>Thanksgiving Break</div> <div>• No School</div> <div>29</div>	<div>30</div>

DECEMBER



The IES Art Show is a community event that highlights our students' art talents. This year the theme was "The Wonderful World of Imagination." Projects celebrated Disney and the WONDERFUL, creative, and imaginative ideas of the IES students. We are proud to be Tigers!

School Abbreviations

BWE	Bradford Woods Elementary
CMS	Carson Middle
FES	Franklin Elementary
HES	Hosack Elementary
IES	Ingotar Elementary
IMS	Ingotar Middle
MCK	McKnight Elementary
MES	Marshall Elementary
MMS	Marshall Middle
NAI	NA Intermediate High
NASH	NA Senior High
PES	Peebles Elementary
ES	Elementary School
MS	Middle School
HS	High School
CAO	Central Administrative Offices
FAC	Facilities Department

WA

2022

JANUARY



At Ingomar Middle School, our students and staff beam with pride, cherishing their identity as Tigers during the annual Proud to Be Ingomar Day. This fun event unites everyone in celebration, reinforcing the strong bond within the “We” MS Family, making it a cherished tradition for all of IMS.

SUNDAY	MONDAY	TUESDAY	WEDNESDAY	THURSDAY	FRIDAY	SATURDAY
<div>DECEMBER</div> <div>SMTWTFS</div> <div>1234567</div> <div>891011121314</div> <div>15161718192021</div> <div>22232425262728</div> <div>293031</div>	<div>FEBRUARY</div> <div>SMTWTFS</div> <div>1</div> <div>2345678</div> <div>9101112131415</div> <div>16171819202122</div> <div>232425262728</div>		<div>Winter Break</div> <div>No School</div> <div>NEW YEAR'S DAY</div> <div>JAPANESE NEW YEAR</div> <div>1</div>	<div>81</div> <div>2</div>	<div>82</div> <div>IES PTO Meeting</div> <div>9:30 AM</div> <div>3</div>	<div>4</div>
<div>PMEA District Orchestra</div> <div>5</div>	<div>83</div> <div>NAI Band Concert</div> <div>7:00 PM</div> <div>6</div>	<div>84</div> <div>PES PTA Meeting</div> <div>9:15 AM</div> <div>ORTHODOX CHRISTMAS</div> <div>7</div>	<div>85</div> <div>FES Orchestra Concert</div> <div>7:00 PM</div> <div>HES PFA Meeting</div> <div>7:00 PM</div> <div>MES Band Concert</div> <div>7:00 PM</div> <div>School Board Work Session</div> <div>CAO Board Room 7:00 PM</div> <div>8</div>	<div>86</div> <div>Concerts</div> <div>FES Band 7:00 PM</div> <div>HES Orchestra 7:00 PM</div> <div>MCK Orchestra at CMS 7:00 PM</div> <div>MES Orchestra at NASH 7:00 PM</div> <div>CMS/IMS/MMS PTSO Mtg 9:30 AM</div> <div>MCK PFA PTA Meeting 9:15 AM</div> <div>NAI/NASH Parent Coffee</div> <div>NASH Auditorium/Virtual 8:00 AM</div> <div>NAI/NASH PTSO</div> <div>NASH Auditorium/Virtual 9:30 AM</div> <div>NAI Impact Meeting</div> <div>NASH after coffee 9:00 AM</div> <div>PMEA District Orchestra</div> <div>9</div>	<div>87</div> <div>MES PFA Meeting</div> <div>9:15 AM</div> <div>PES Orchestra Concert</div> <div>7:00 PM</div> <div>Special Ed Parent Networking Group</div> <div>Ponce Room, Baierl Center 9:30 AM</div> <div>PMEA District Orchestra</div> <div>10</div>	<div>PMEA District Orchestra</div> <div>11</div>
<div>12</div>	<div>88</div> <div>13</div>	<div>89</div> <div>BWE PFA Meeting</div> <div>9:30 AM</div> <div>IES Orchestra Concert</div> <div>7:00 PM</div> <div>MMS Orchestra Concert</div> <div>7:00 PM</div> <div>NA Foundation Meeting</div> <div>CAO Board Room 7:00 PM</div> <div>14</div>	<div>90</div> <div>15</div>	<div>91</div> <div>CMS Band Concert</div> <div>7:00 PM</div> <div>IES Band Concert</div> <div>7:00 PM</div> <div>MMS Winter Band Concert</div> <div>7:00 PM</div> <div>16</div>	<div>92</div> <div>Elementary/Secondary Report Period Ends</div> <div>Spring Sports Meeting</div> <div>MMS 8:10 AM</div> <div>17</div>	<div>18</div>
<div>19</div>	<div>No School</div> <div>DR. MARTIN LUTHER KING, JR. DAY</div> <div>20</div>	<div>93</div> <div>21</div>	<div>94</div> <div>School Board Regular Meeting</div> <div>CAO Board Room 7:00 PM</div> <div>22</div>	<div>95</div> <div>MES Chorus Concert</div> <div>NASH 7:00 PM</div> <div>Distinguished Alumni Gala</div> <div>The Chadwick 6:00 PM</div> <div>PMEA District Band</div> <div>23</div>	<div>96</div> <div>FES BPFA Bingo Night</div> <div>6:00 PM</div> <div>PMEA District Band</div> <div>24</div>	<div>NAI Pre-ACT</div> <div>Doors open at 7:15 AM</div> <div>PMEA District Band</div> <div>25</div>
<div>26</div>	<div>97</div> <div>27</div>	<div>98</div> <div>CAO Launching into Kindergarten</div> <div>Virtual 10:00 AM</div> <div>CMS 6:00 PM</div> <div>28</div>	<div>99</div> <div>CHINESE NEW YEAR</div> <div>29</div>	<div>100</div> <div>30</div>	<div>101</div> <div>NAI/NASH Jazz Concert</div> <div>MMS 7:00 PM</div> <div>31</div>	<div>School Abbreviations</div> <div>BWE Bradford Woods Elementary</div> <div>CMS Carson Middle</div> <div>FES Franklin Elementary</div> <div>HES Hosack Elementary</div> <div>IES Ingomar Elementary</div> <div>IMS Ingomar Middle</div> <div>MCK McKnight Elementary</div> <div>MES Marshall Elementary</div> <div>MMS Marshall Middle</div> <div>NAI NA Intermediate High</div> <div>NASH NA Senior High</div> <div>PES Peebles Elementary</div> <div>ES Elementary School</div> <div>MS Middle School</div> <div>HS High School</div> <div>CAO Central Administrative Offices</div> <div>FAC Facilities Department</div>

WA

2022

FEBRUARY



McKnight Elementary hosted the 1st annual Basketball Championship in March 2024, featuring Team Shute vs. Team Gillis. The top 20 student fundraisers from *Jump for the Hills* participated in a night of community, celebration and recognition. Through the generosity of the McKnight community, the school was able to raise over \$19,000 for *North Hills Community Outreach*. Over the past five years, McKnight has raised over \$70,000 for *NHCO* through *Jump for the Hills*. We are proud of our students and families for being so kind, courageous, motivated, and responsible.

SUNDAY	MONDAY	TUESDAY	WEDNESDAY	THURSDAY	FRIDAY	SATURDAY
<div><div>JANUARY</div><div>SMTWTFS</div><div>12345678910111213141516171819202122232425262728293031</div></div>	<div><div>MARCH</div><div>SMTWTFS</div><div>12345678910111213141516171819202122232425262728293031</div></div>					<div><div>NASH Snow Ball</div><div>• 7:30 PM</div></div> <div>NATIONAL AFRICAN AMERICAN HISTORY MONTH</div> <div>1</div>
<div>GROUNDHOG DAY</div> <div>2</div>	102 <div>3</div>	103 <div>NAI Elective Fair</div> <div>• 6:00 PM</div> <div>4</div>	104 <div>NAI Spring Play Senior Citizen & Gold Card Performance</div> <div>• 3:30 PM</div> <div>PMEA District Chorus</div> <div>5</div>	105 <div>NAI Spring Play</div> <div>• 7:00 PM</div> <div>PMEA District Chorus</div> <div>6</div>	106 <div>IES PTO Meeting</div> <div>• 9:30 AM</div> <div>MES PFA Meeting</div> <div>• 9:15 AM</div> <div>NAI Spring Play</div> <div>• 7:00 PM</div> <div>PMEA District Chorus</div> <div>7</div>	<div>NAI Spring Play</div> <div>• 2:00 PM</div> <div>• 7:00 PM</div> <div>ACT at NASH</div> <div>• Doors open at 7:15 AM</div> <div>8</div>
<div>9</div>	107 <div>Community Connections</div> <div>• 6:30-8:00 PM</div> <div>10</div>	108 <div>PES PTA Meeting</div> <div>• 6:30 PM</div> <div>NA Foundation Meeting</div> <div>• CAO Board Room 7:00 PM</div> <div>11</div>	109 <div>UBO Meeting</div> <div>• Ponce Room, Baierl Center 6:30 PM</div> <div>School Board Work Session</div> <div>• CAO Board Room 7:00 PM</div> <div>LINCOLN'S BIRTHDAY</div> <div>12</div>	110 <div>CMS/IMS/MMS PTSO Meeting</div> <div>—Current Grades 6 & 7 Scheduling Info</div> <div>• 9:30 AM</div> <div>13</div>	111 <div>ES Valentine's Day Parties</div> <div>• Check with each building for schedules</div> <div>FES PFA Meeting</div> <div>• 9:30 AM</div> <div>Special Ed Parent Networking Group</div> <div>• Ponce Room, Baierl Center 9:30 AM</div> <div>VALENTINE'S DAY</div> <div>14</div>	<div>15</div>
<div>16</div>	<div>PRESIDENT'S DAY</div> <div>17</div>	112 <div>Special Ed Advisory</div> <div>• CAO Board Room 1:00 PM</div> <div>18</div>	113 <div>WASHINGTON'S BIRTHDAY</div> <div>19</div>	114 <div>Gifted Ed Advisory</div> <div>• CAO Board Room 1:00 PM</div> <div>PMEA Region Orchestra</div> <div>20</div>	115 <div>IES PTO Bingo Night</div> <div>• 6:00 PM</div> <div>SPLC/EAC/SAC</div> <div>• 9:30-11:00 AM</div> <div>PMEA Region Orchestra</div> <div>21</div>	<div>PMEA Region Orchestra</div> <div>22</div>
<div>23</div>	116 <div>ES Jump for the Hills</div> <div>HS Musical 8th Grade Performance</div> <div>• NASH 9:30 AM</div> <div>24</div>	117 <div>BWE Spring Pictures</div> <div>HS Musical for Staff & Senior Citizens</div> <div>• NASH 4:30 PM</div> <div>25</div>	118 <div>HS Musical Performance</div> <div>• NASH 7:00 PM</div> <div>School Board Regular Meeting</div> <div>• CAO Board Room 7:00 PM</div> <div>MAHA SHIVARATRI</div> <div>26</div>	119 <div>HS Musical Performance</div> <div>• NASH 7:00 PM</div> <div>27</div>	120 <div>HS Musical Performance</div> <div>• NASH 7:00 PM</div> <div>28</div>	<div>School Abbreviations</div> <div>BWE Bradford Woods Elementary</div> <div>CMS Carson Middle</div> <div>FES Franklin Elementary</div> <div>HES Hosack Elementary</div> <div>IES Ingomar Elementary</div> <div>IMS Ingomar Middle</div> <div>MCK McKnight Elementary</div> <div>MES Marshall Elementary</div> <div>MMS Marshall Middle</div> <div>NAI NA Intermediate High</div> <div>NASH NA Senior High</div> <div>PES Peebles Elementary</div> <div>ES Elementary School</div> <div>MS Middle School</div> <div>HS High School</div> <div>CAO Central Administrative Offices</div> <div>FAC Facilities Department</div>

WA

2020

MARCH



Marshall Elementary School students can always be found making connections with the community. From Elementary Nights at the football games and hosting our veterans, to raising money for the Education Partnership and Children's Grief Awareness—connecting with our community is what makes MES Proud to be a Tiger!

SUNDAY	MONDAY	TUESDAY	WEDNESDAY	THURSDAY	FRIDAY	SATURDAY
<div>School Abbreviations</div> <div>BWE Bradford Woods Elementary</div> <div>CMS Carson Middle</div> <div>FES Franklin Elementary</div> <div>HES Hosack Elementary</div> <div>IES Ingomar Elementary</div> <div>IMS Ingomar Middle</div> <div>MCK McKnight Elementary</div> <div>MES Marshall Elementary</div> <div>MMS Marshall Middle</div> <div>NAI NA Intermediate High</div> <div>NASH NA Senior High</div> <div>PES Peebles Elementary</div> <div>ES Elementary School</div> <div>MS Middle School</div> <div>HS High School</div> <div>CAO Central Administrative Offices</div> <div>FAC Facilities Department</div>	<div>FEBRUARY</div> <div>SMTWTFS</div> <div>1</div> <div>2345678</div> <div>9101112131415</div> <div>16171819202122</div> <div>232425262728</div>	<div>APRIL</div> <div>SMTWTFS</div> <div>12345</div> <div>6789101112</div> <div>13141516171819</div> <div>20212223242526</div> <div>27282930</div>				<div>HS Musical Performance</div> <div>• NASH 7:00 PM</div> <div>FIRST DAY OF RAMADAN</div> <div>(begins at sunset, ends at nightfall March 30)</div> <div>MUSIC IN OUR SCHOOLS MONTH</div> <div>NATIONAL NUTRITION MONTH</div> <div>NATIONAL WOMEN'S HISTORY MONTH</div> <div>WORLD LANGUAGE MONTH</div> <div>YOUTH ART MONTH</div> <div>1</div>
<div>HS Musical Performance</div> <div>• NASH 2:00 PM</div> <div>2</div>	<div>121</div> <div>BWE/HES/IES/MES</div> <div>Read Across America Week</div> <div>• Through Friday, March 7</div> <div>Kindergarten Registration</div> <div>First Day of Spring Sports (All Levels)</div> <div>3</div>	<div>122</div> <div>IES PTO Breakfast Bash</div> <div>PES Spring Picture Day</div> <div>4</div>	<div>123</div> <div>HES PFA Meeting</div> <div>• 7:00 PM</div> <div>IES PTO Breakfast Bash</div> <div>Kindergarten Registration</div> <div>• CAO Board Room</div> <div>ASH WEDNESDAY</div> <div>5</div>	<div>124</div> <div>IES Spring Picture Day</div> <div>IES PTO Breakfast Bash</div> <div>MES Spring Picture Day</div> <div>NAI Parent Coffee</div> <div>• Library 7:30 AM</div> <div>NAI/NASH PTSO</div> <div>• NAI/Virtual Option 8:30 AM</div> <div>PMEA Region Band</div> <div>6</div>	<div>125</div> <div>HES Spring Picture Day</div> <div>IES PTO Meeting</div> <div>• 9:30 AM</div> <div>MES PFA Meeting</div> <div>• 9:15 AM</div> <div>MMS Spring Picture Day</div> <div>PMEA Region Band</div> <div>7</div>	<div>SAT at NASH</div> <div>• Doors open at 7:15 AM</div> <div>PMEA Region Band</div> <div>8</div>
<div>9</div>	<div>126</div> <div>BWE Spring Book Fair Week</div> <div>• Through Friday, March 14</div> <div>10</div>	<div>127</div> <div>BWE Book Fair Family Night</div> <div>• 3:30-7:30 PM</div> <div>BWE PFA Meeting</div> <div>• 9:30 AM</div> <div>PES PTA Meeting</div> <div>• 9:15 AM</div> <div>NA Foundation Meeting</div> <div>• CAO Board Room 7:00 PM</div> <div>11</div>	<div>128</div> <div>IMS Spring Picture Day</div> <div>PE-sponsored Blood Drive</div> <div>• NASH 6:45 AM-1:00 PM</div> <div>School Board Work Session</div> <div>• CAO Board Room 7:00 PM</div> <div>12</div>	<div>129</div> <div>FES Staff vs Parents Volleyball Game</div> <div>• 6:30 PM</div> <div>CMS/IMS/MMS PTSO Meeting</div> <div>• 9:30 AM</div> <div>MCK PFA Meeting</div> <div>• 6:30 PM</div> <div>13</div>	<div>130</div> <div>CMS Spring Picture Day</div> <div>FES PFA Meeting</div> <div>• 9:30 AM</div> <div>MCK Spring Picture Day</div> <div>Special Ed Parent Networking Group</div> <div>• Ponce Room, Baierl Center 9:30 AM</div> <div>HOLI</div> <div>14</div>	<div>15</div>
<div>16</div>	<div>131</div> <div>FES Spring Book Fair</div> <div>FES Spring Picture Day</div> <div>HES Spring Book Fair</div> <div>NAI/NAS Chorus Concert Rehearsal</div> <div>• NASH 2:30 PM</div> <div>SAINT PATRICK'S DAY</div> <div>17</div>	<div>132</div> <div>FES Spring Book Fair</div> <div>FES Breakfast Buddies (A-H)</div> <div>• 8:00 AM</div> <div>MES Music in Our Schools</div> <div>NAI/NASH Chorus Concert</div> <div>• NASH 7:00 PM</div> <div>18</div>	<div>133</div> <div>FES Spring Book Fair</div> <div>FES Breakfast Buddies (I-P)</div> <div>• 8:00 AM</div> <div>PMEA Region Chorus</div> <div>School Board Regular Meeting</div> <div>• CAO Board Room 7:00 PM</div> <div>19</div>	<div>134</div> <div>FES Spring Book Fair</div> <div>FES Breakfast Buddies (Q-Z)</div> <div>• 8:00 AM</div> <div>HES Art Show</div> <div>• 5:00 PM</div> <div>PMEA Region Chorus</div> <div>FIRST DAY OF SPRING</div> <div>20</div>	<div>135</div> <div>FES Spring Book Fair</div> <div>Elementary/Secondary Report Period Ends</div> <div>FES Spring Parties</div> <div>• 2:15 PM</div> <div>UBO Scholarship Deadline</div> <div>• Athletic Office, Noon</div> <div>PMEA Region Chorus</div> <div>21</div>	<div>22</div>
<div>23</div>	<div>Professional Learning Day</div> <div>• No School</div> <div>24</div>	<div>Spring Break</div> <div>• No School</div>	<div>Spring Break</div> <div>• No School</div>	<div>Spring Break</div> <div>• No School</div>	<div>Spring Break</div> <div>• No School</div>	
<div>LAST DAY OF RAMADAN</div> <div>(ends at nightfall)</div> <div>EID AL-FITR</div> <div>(begins at sundown)</div> <div>30</div>	<div>136</div> <div>EID AL-FITR</div> <div>(ends at nightfall)</div> <div>31</div>	<div>25</div>	<div>26</div>	<div>27</div>	<div>28</div>	<div>29</div>

NA

2022

APRIL



Our students and staff are the **SPARK** to Marshall Middle School. Whether it be through their beaming smiles, energetic personalities, or acts of kindness... each one of our MMS students & staff are special.

Students and staff can be seen participating in our school-wide talent show, Pie Day, dodgeball games, musical performances, athletic events, academic competitions, or just enjoying one another's company throughout MMS!

SUNDAY	MONDAY	TUESDAY	WEDNESDAY	THURSDAY	FRIDAY	SATURDAY
<div>School Abbreviations</div> <div>BWE Bradford Woods Elementary</div> <div>CMS Carson Middle</div> <div>FES Franklin Elementary</div> <div>HES Hosack Elementary</div> <div>IES Ingomar Elementary</div> <div>IMS Ingomar Middle</div> <div>MCK McKnight Elementary</div> <div>MES Marshall Elementary</div> <div>MMS Marshall Middle</div> <div>NAI NA Intermediate High</div> <div>NASH NA Senior High</div> <div>PES Peebles Elementary</div> <div>ES Elementary School</div> <div>MS Middle School</div> <div>HS High School</div> <div>CAO Central Administrative Offices</div> <div>FAC Facilities Department</div>		<div>137</div> <div>MES Book Fair</div> <div></div> <div>1</div> <div>APRIL FOOL'S DAY</div>	<div>138</div> <div>MES Book Fair</div> <div></div> <div>2</div>	<div>139</div> <div>BWE Art Show</div> <div>• 5:30-7:30 PM</div> <div>MES Book Fair</div> <div></div> <div>3</div>	<div>140</div> <div>IES PTO Meeting</div> <div>• 9:30 AM</div> <div>MES Book Fair</div> <div>MES PFA Meeting</div> <div>• 9:15 AM</div> <div></div> <div>4</div>	<div>ACT at NASH</div> <div>• Doors open at 7:15 AM</div> <div></div> <div>5</div>
<div>6</div>	<div>141</div> <div>MCK Book Fair</div> <div>MES Book Fair</div> <div>PES Spring Book Fair</div> <div>NAI/NASH Orchestra Rehearsal</div> <div>• NASH 2:30 PM</div> <div>7</div>	<div>142</div> <div>MCK Book Fair</div> <div>MES Book Fair</div> <div>NAI/NASH Orchestra Concert</div> <div>• NASH 7:00 PM</div> <div>PES Spring Book Fair</div> <div>PES PTA Meeting</div> <div>• 9:15 AM</div> <div>NA Foundation Meeting</div> <div>• CAO Board Room 7:00 PM</div> <div>8</div>	<div>143</div> <div>FES Art Show</div> <div>• 6:00 PM</div> <div>MCK Book Fair</div> <div>MES Book Fair</div> <div>All-State PMEA Conference</div> <div>SPLC</div> <div>• 9:30-11:00 AM</div> <div>School Board Work Session</div> <div>• CAO Board Room 7:00 PM</div> <div>9</div>	<div>144</div> <div>CMS/IMS/MMS PTSO Meeting</div> <div>—Grade 5 Transition to Middle School</div> <div>• 9:30 AM & 6:30 PM</div> <div>MCK/MES Book Fair</div> <div>MCK Art Show</div> <div>• 6:00 PM</div> <div>MES/PES Art Show</div> <div>• 7:00 PM</div> <div>All-State PMEA Conference</div> <div>EAC</div> <div>• 9:30-11:00 AM</div> <div>10</div>	<div>145</div> <div>FES PFA Meeting</div> <div>• 9:30 AM</div> <div>HES Auction & Dessert Night</div> <div>• 5:30 PM</div> <div>MCK Book Fair</div> <div>MES Book Fair</div> <div>Special Ed Parent Networking Group</div> <div>• Ponce Room, Baiert Center 9:30 AM</div> <div>All-State PMEA Conference</div> <div>SAC</div> <div>• 9:30-11:00 AM</div> <div>11</div>	<div>All-State PMEA Conference</div> <div>PASSOVER</div> <div>(begins at sunset, ends at nightfall, April 20)</div> <div>12</div>
<div>PALM SUNDAY</div> <div>13</div>	<div>146</div> <div></div> <div>14</div>	<div>147</div> <div>NHS Spring Induction</div> <div>• NASH 7:30 PM</div> <div>15</div>	<div>148</div> <div>NAI Project Water Dodgeball Tournament</div> <div>16</div>	<div>No School</div> <div>17</div>	<div>No School</div> <div>GOOD FRIDAY</div> <div>ORTHODOX GOOD FRIDAY</div> <div>18</div>	<div>HOLY SATURDAY</div> <div>19</div>
<div>EASTER SUNDAY</div> <div>LAST DAY OF PASSOVER</div> <div>ORTHODOX EASTER</div> <div>20</div>	<div>149</div> <div>2025 PSSA Testing Window</div> <div>Grades 3-8</div> <div>• Through Friday, May 2</div> <div>21</div>	<div>150</div> <div>NASH Band Concert</div> <div>• 7:00 PM</div> <div>22</div>	<div>151</div> <div>School Board Regular Meeting</div> <div>• CAO Board Room 7:00 PM</div> <div>23</div>	<div>152</div> <div>Take Your Child to Work Day</div> <div>24</div>	<div>153</div> <div></div> <div>25</div>	<div>UBO Banquet</div> <div>• Ponce Room, Baiert Center 9:00 AM</div> <div>26</div>
<div>27</div>	<div>154</div> <div>Community Connections</div> <div>• MMS 6:30 PM</div> <div>28</div>	<div>155</div> <div></div> <div>29</div>	<div>156</div> <div></div> <div>30</div>	<div>MARCH</div> <div>S M T W T F S</div> <div>1</div> <div>2 3 4 5 6 7 8</div> <div>9 10 11 12 13 14 15</div> <div>16 17 18 19 20 21 22</div> <div>23 24 25 26 27 28 29</div> <div>30 31</div> <div>MAY</div> <div>S M T W T F S</div> <div>1 2 3</div> <div>4 5 6 7 8 9 10</div> <div>11 12 13 14 15 16 17</div> <div>18 19 20 21 22 23 24</div> <div>25 26 27 28 29 30 31</div>		

NA

2022

MAY



NA INTERMEDIATE HIGH SCHOOL
PROUD TO BE A
TIGER



At NAI we are Proud to be Tigers! It's more than just a saying—it's a declaration of belonging, a testament to the bonds that tie us together as one roaring family. Our school spirit is a beacon of positivity and support. We stand tall, embracing diversity, celebrating achievements, and lifting each other up in times of challenge. With every victory, big or small, our pride shows, reaffirming our commitment to excellence and our unwavering loyalty to our school community. This IS who we are at NAI.

SUNDAY	MONDAY	TUESDAY	WEDNESDAY	THURSDAY	FRIDAY	SATURDAY
<div>School Abbreviations</div> <div>BWE Bradford Woods Elementary</div> <div>CMS Carson Middle</div> <div>FES Franklin Elementary</div> <div>HES Hosack Elementary</div> <div>IES Ingomar Elementary</div> <div>IMS Ingomar Middle</div> <div>MCK McKnight Elementary</div> <div>MES Marshall Elementary</div> <div>MMS Marshall Middle</div> <div>NAI NA Intermediate High</div> <div>NASH NA Senior High</div> <div>PES Peebles Elementary</div> <div>ES Elementary School</div> <div>MS Middle School</div> <div>HS High School</div> <div>CAO Central Administrative Offices</div> <div>FAC Facilities Department</div>	<div>APRIL</div> <div>SMTWTFSS</div> <div>12345</div> <div>6789101112</div> <div>13141516171819</div> <div>20212223242526</div> <div>27282930</div>	<div>JUNE</div> <div>SMTWTFSS</div> <div>1234567</div> <div>891011121314</div> <div>15161718192021</div> <div>22232425262728</div> <div>2930</div>		<div>157</div> <div>CMS/MMS Chorus Concerts</div> <div>• 7:00 PM</div> <div>IMS Orchestra Concert</div> <div>• 7:00 PM</div> <div>NASH Art Exhibit</div> <div>• 6:00 PM</div> <div>ASIAN AMERICAN & PACIFIC ISLANDER HISTORY MONTH</div> <div>NATIONAL PHYSICAL FITNESS & SPORTS MONTH</div>	<div>158</div> <div>IES PTO Meeting</div> <div>• 9:30 AM</div> <div>Middle School Jazz Night</div> <div>• MMS 7:00 PM</div> <div>Fall Sports Meeting</div> <div>• MMS 8:10 AM</div>	<div>SAT at NASH</div> <div>• Doors open at 7:15 AM</div> <div>Senior Prom</div> <div>• 7:00 -11:00 PM</div>
<div>NATIONAL MUSIC WEEK</div> <div>4</div>	<div>159</div> <div>HES & MMS Orchestra Concerts</div> <div>• 7:00 PM</div> <div>IES Chorus Concert</div> <div>• 7:00 PM</div> <div>MES Chorus Concert</div> <div>• NASH 7:00 PM</div> <div>PES Band Concert</div> <div>• 7:00 PM</div> <div>AP Exam Testing Window</div> <div>• Through Friday, May 16</div> <div>TEACHER APPRECIATION WEEK</div> <div>CINCO de MAYO</div> <div>5</div>	<div>160</div> <div>NAI Band Concert</div> <div>• NAI 7:00 PM</div> <div>PES PTA Meeting</div> <div>• 9:15 AM</div> <div>K-12 ELD (ESL) Family Night</div> <div>• MES 6:00 PM</div> <div>NATIONAL NURSES WEEK</div> <div>6</div>	<div>161</div> <div>HES PFA Meeting</div> <div>• 7:00 PM</div> <div>NA Honors Chamber Repertoire Concert</div> <div>• 5:00 PM</div> <div>Distinguished Achievement Awards</div> <div>• CMS 5:30 PM</div> <div>School Board Work Session</div> <div>• CAO Board Room 7:00 PM</div> <div>7</div>	<div>162</div> <div>CMS/IMS/MMS PTSO Meeting</div> <div>• 9:30 AM</div> <div>HES Band & Chorus Concert</div> <div>• 7:00 PM</div> <div>IES Spring Band Concert</div> <div>• 7:00 PM</div> <div>MCK PFA Meeting</div> <div>• 9:15 AM</div> <div>MES Band Concert</div> <div>• 7:00 PM</div> <div>8</div>	<div>163</div> <div>5th Grade Move-up Day</div> <div>• At CMS for HES, MCK, PES</div> <div>• At IMS for FES, IES, MCK</div> <div>• At MMS for BWE, FES, MES</div> <div>FES PFA Meeting</div> <div>• 9:30 AM</div> <div>MES PFA Meeting</div> <div>• 9:15 AM</div> <div>HS Jazz Night</div> <div>• MMS 7:00 PM</div> <div>9</div>	<div>TigerTHON</div> <div>• NASH 6:00 PM</div> <div>10</div>
<div>MOTHER'S DAY</div> <div>11</div>	<div>164</div> <div>FES Orchestra Concert</div> <div>• IMS 7:00 PM</div> <div>IES Spring Book Fair</div> <div>Cabaret at NASH</div> <div>• 7:00 PM</div> <div>Spring Keystone Exam Testing Window</div> <div>• Through Friday, May 23</div> <div>12</div>	<div>165</div> <div>BWE PFA Meeting</div> <div>• 9:30 AM</div> <div>BWE Chorus & Band Concert</div> <div>• 6:00 PM</div> <div>FES/ MCK Band Concerts</div> <div>• 7:00 PM</div> <div>IES Spring Book Fair</div> <div>IES Orchestra Concert</div> <div>• 7:00 PM</div> <div>MES Orchestra Concerts</div> <div>• NASH 7:00 PM</div> <div>NA Foundation Mtg</div> <div>• CAO Board Room 7:00 PM</div> <div>13</div>	<div>166</div> <div>IES Spring Book Fair</div> <div>MCK Chorus Concert</div> <div>• 4th Grade—6:00 PM</div> <div>• 5th Grade—7:00 PM</div> <div>PES Orchestra Concert</div> <div>• 7:00 PM</div> <div>14</div>	<div>167</div> <div>CMS/IMS/MMS Band Concerts</div> <div>• 7:00 PM</div> <div>IES Spring Book Fair/Family Night</div> <div>IES PTO Basket Raffle</div> <div>IES Art Show</div> <div>• 5:30 PM</div> <div>NASH Parent Coffee</div> <div>• Ponce Room, Baierl Center 8:00 AM</div> <div>NAI/NASH PTSO Meeting</div> <div>• Ponce Room, Baierl Center/ Virtual Option 9:00 AM</div> <div>15</div>	<div>168</div> <div>IES Spring Book Fair</div> <div>16</div>	<div>17</div>
<div>HS Choral Banquet</div> <div>• TBD 5:00 PM</div> <div>18</div>	<div>169</div> <div>BWE Orchestra Concert</div> <div>• 6:00 PM</div> <div>FES Chorus Concert</div> <div>• NASH 7:00 PM</div> <div>MCK Orchestra Concert</div> <div>• NAI 7:00 PM</div> <div>19</div>	<div>Professional Learning Day</div> <div>• No School</div> <div>20</div>	<div>170</div> <div>School Board Regular Meeting</div> <div>• CAO Board Room 7:00 PM</div> <div>21</div>	<div>171</div> <div>CMS Orchestra Concert</div> <div>• 7:00 PM</div> <div>IES Memorial Day Program</div> <div>IMS Chorus Concert</div> <div>• NASH 7:00 PM</div> <div>22</div>	<div>172</div> <div>NAI 8th Grade Move-up Day</div> <div>NASH Project Water Dodgeball Tournament</div> <div>• 7:30 AM</div> <div>23</div>	<div>24</div>
<div>25</div>	<div>No School</div> <div>MEMORIAL DAY</div> <div>26</div>	<div>173</div> <div>27</div>	<div>174</div> <div>Key Club Sponsored Blood Drive</div> <div>• NASH 6:45 AM</div> <div>28</div>	<div>175</div> <div>IES Field Day</div> <div>THIS IS US</div> <div>• NAI 6:00 PM</div> <div>29</div>	<div>176</div> <div>BWE, FES, HES, MCK, MES, PES Field Day</div> <div>IES Field Day Rain Date</div> <div>IES PTO Meeting</div> <div>• 9:30 AM</div> <div>Senior Banquet</div> <div>• Gateway Clipper 4:00 PM</div> <div>30</div>	<div>31</div>

WA

UNION

JUNE



At Peebles Elementary School we make learning fun, show the importance of kindness to others, and remind everyone that **YOU MATTER!** We enjoy theme days, fill our halls with music, honor our Veterans, and celebrate **MANY** traditions together. Memories abound at Peebles, reminding one another that, *Once a Peebles student, always a Peebles student!*

SUNDAY	MONDAY	TUESDAY	WEDNESDAY	THURSDAY	FRIDAY	SATURDAY
<div>SHAVUOT (begins at sundown, ends at nightfall, June 3)</div> <div>1</div>	<div>177 FES, MES, PES Field Day Rain Date</div> <div>2</div>	<div>178 IMS Mini-Course Day NASH Post-Secondary Fair • 8:00 AM</div> <div>SHAVUOT (ends at nightfall)</div> <div>3</div>	<div>179 HES PFA Meeting • 7:00 PM MMS Mini-Course Day</div> <div>4</div>	<div>180 Class of 2025 “Walk Back in Time”</div> <div>5</div>	<div>181 Last Day of School for Students Class of 2025 Graduation • Newman Stadium 7:00 PM</div> <div>EID AL-ADHA/HAJJ (begins at sunset)</div> <div>6</div>	<div>EID AL-ADHA/HAJJ (ends at nightfall)</div> <div>7</div>
<div>8</div>	<div>Professional Learning Day</div> <div>9</div>	<div>NA Foundation Meeting • CAO Board Room 7:00 PM</div> <div>10</div>	<div>School Board Combined Meeting • CAO Board Room 7:00 PM</div> <div>11</div>	<div>12</div>	<div>13</div>	<div>14</div>
<div>FATHER’S DAY</div> <div>15</div>	<div>PES Summer Academy</div> <div>16</div>	<div>PES Summer Academy</div> <div>17</div>	<div>PES Summer Academy</div> <div>18</div>	<div>PES Summer Academy</div> <div>JUNETEENTH</div> <div>19</div>	<div>PES Summer Academy</div> <div>FIRST DAY OF SUMMER</div> <div>20</div>	<div>21</div>
<div>22</div>	<div>PES Summer Academy</div> <div>23</div>	<div>PES Summer Academy</div> <div>24</div>	<div>PES Summer Academy</div> <div>25</div>	<div>PES Summer Academy</div> <div>26</div>	<div>PES Summer Academy</div> <div>NEW HIJRI YEAR</div> <div>27</div>	<div>28</div>
<div>29</div>	<div>30</div>	<div>School Abbreviations</div> <div>BWE Bradford Woods Elementary</div> <div>CMS Carson Middle</div> <div>FES Franklin Elementary</div> <div>HES Hosack Elementary</div> <div>IES Ingomar Elementary</div> <div>IMS Ingomar Middle</div> <div>MCK McKnight Elementary</div> <div>MES Marshall Elementary</div> <div>MMS Marshall Middle</div> <div>NAI NA Intermediate High</div> <div>NASH NA Senior High</div> <div>PES Peebles Elementary</div> <div>ES Elementary School</div> <div>MS Middle School</div> <div>HS High School</div> <div>CAO Central Administrative Offices</div> <div>FAC Facilities Department</div>				<div>MAY</div> <div>S M T W T F S</div> <div>4 5 6 7 8 9 10</div> <div>11 12 13 14 15 16 17</div> <div>18 19 20 21 22 23 24</div> <div>25 26 27 28 29 30 31</div> <div>JULY</div> <div>S M T W T F S</div> <div>6 7 8 9 10 11 12</div> <div>13 14 15 16 17 18 19</div> <div>20 21 22 23 24 25 26</div> <div>27 28 29 30 31</div>

SUNDAY	MONDAY	TUESDAY	WEDNESDAY	THURSDAY	FRIDAY	SATURDAY																																										
JULY 2025		1	2	3	4 <small>INDEPENDENCE DAY</small>	5																																										
6	7	8	9	10	11	12																																										
13	14	15	16	17	18	19																																										
20	21	22	23	24	25	26																																										
27	28	29	30	31	<div><div>JUNE</div><table><tr><td>S</td><td>M</td><td>T</td><td>W</td><td>T</td><td>F</td><td>S</td></tr><tr><td>1</td><td>2</td><td>3</td><td>4</td><td>5</td><td>6</td><td>7</td></tr><tr><td>8</td><td>9</td><td>10</td><td>11</td><td>12</td><td>13</td><td>14</td></tr><tr><td>15</td><td>16</td><td>17</td><td>18</td><td>19</td><td>20</td><td>21</td></tr><tr><td>22</td><td>23</td><td>24</td><td>25</td><td>26</td><td>27</td><td>28</td></tr><tr><td>29</td><td>30</td><td></td><td></td><td></td><td></td><td></td></tr></table></div>	S	M	T	W	T	F	S	1	2	3	4	5	6	7	8	9	10	11	12	13	14	15	16	17	18	19	20	21	22	23	24	25	26	27	28	29	30						
S	M	T	W	T	F	S																																										
1	2	3	4	5	6	7																																										
8	9	10	11	12	13	14																																										
15	16	17	18	19	20	21																																										
22	23	24	25	26	27	28																																										
29	30																																															

SUNDAY	MONDAY	TUESDAY	WEDNESDAY	THURSDAY	FRIDAY	SATURDAY
AUGUST 2025		SEPTEMBER S M T W T F S 1 2 3 4 5 6 7 8 9 10 11 12 13 14 15 16 17 18 19 20 21 22 23 24 25 26 27 28 29 30			1	2
3	4	5	6	7	8	9
10	11	12	13	14	15	16
17	18	19	20	21	22	23
24	25	26	27	28	29	30
31						



Non-profit Org.
U.S. Postage
PAID
Pittsburgh, PA
PERMIT NO. 572

ADDRESS SERVICE REQUESTED



At North Allegheny Senior High School, being a Tiger isn't just about the mascot; it's ingrained in our culture, a real source of pride. It's on display at football games in the fall, when our students light up Newman Stadium with excitement. More than spectators, they're active participants in a unifying tradition. The energy of the marching band, the spirit of the cheerleaders, and the thrill of the game itself all come together in a symphony of Tiger Pride. Beyond football, it's a celebration of community and camaraderie.

At NASH, Athletics, Academics, Arts, Activities, and Achievements make our students Proud to be Tigers for Life!

North Allegheny School District does not discriminate in its education programs, activities, or employment practices based on race, color, national origin, sex, sexual orientation, disability, age, religion, ancestry, genetic information, or any other legally-protected category. Announcement of this policy is in accordance with State Law including the Pennsylvania Human Relations Act and with Federal law, including Title IV of the Civil Rights Act of 1964, Title IX of the Education Amendments of 1972, Section 504 of the Rehabilitation Act of 1973, the Age Discrimination in Employment Act of 1967, and the Americans with Disabilities Act of 1990. Inquiries on related matters should be directed to the Title IX Compliance Officer, 200 Hillvue Lane, Pittsburgh PA 15237. Further details are available under *Policies & Procedures* at northallegheny.org