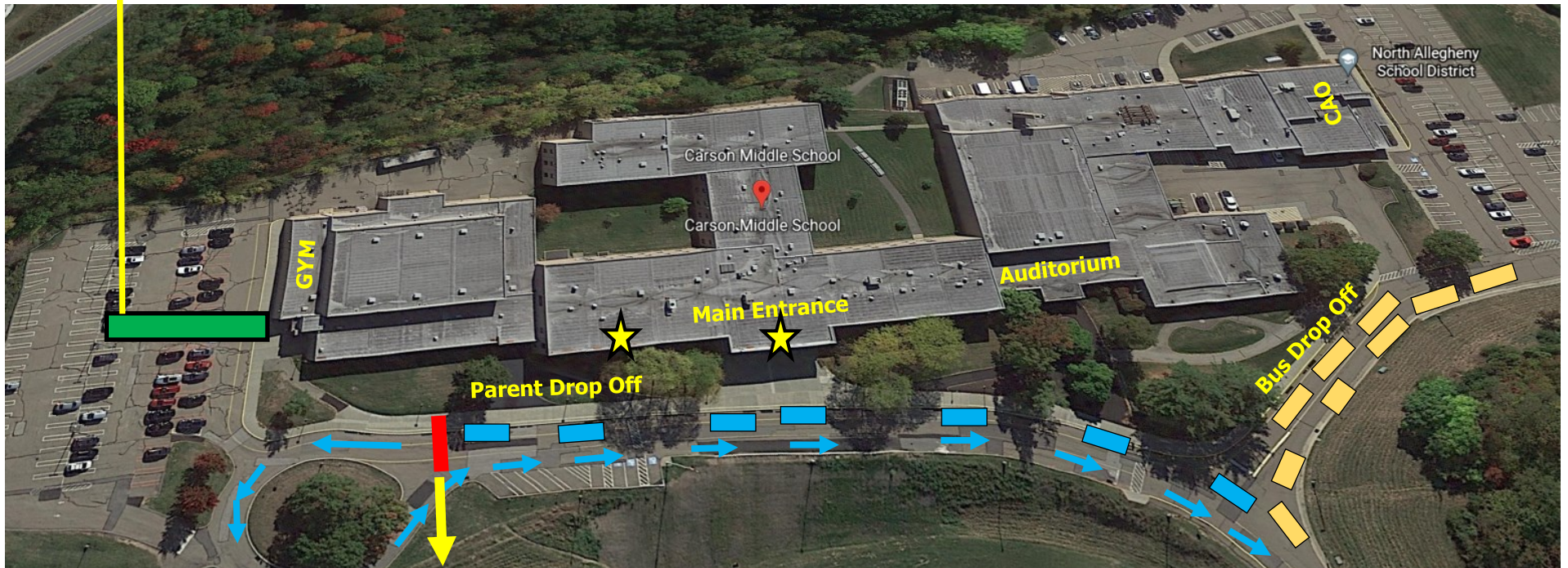


Crosswalk for students
NO PARKING

CMS Morning Drop-Off for Students



NO PARKING: Parents cannot park beyond this point to drop-off student because it will block entrance for CMS Staff.

IMPORTANT: When dropping your student off in the morning, do not pull out of the lane to go around another car as this will greatly interfere with staff members arriving. Please wait your turn to pull forward and around the loop to exit.

STUDENT DROP-OFF

Parents who drive their children to Carson Middle School **must remember to drop off their children along the sidewalk in front of the building. Students will enter the building using the main entrance.** This rule is particularly important between 7:55 a.m. and 8:10 a.m. **Please follow the signs and arrows for student drop-off to help maintain a safe parking area. You can view this map/diagram on the CMS website under the "About Our School" tab and "Student Drop-Off and Pick-Up."**

Key

- School Bus
- Car

Students will enter thru the main entrance and counseling doors.